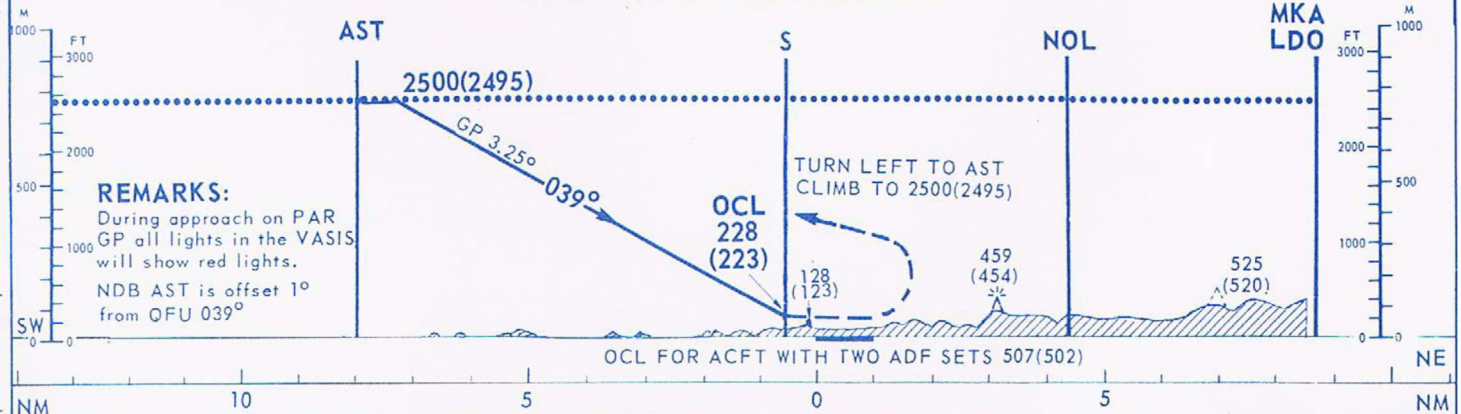


BEARINGS ARE MAGNETIC
ELEV AND ALT IN FT MSL 207
HGT IN FT ABOVE AD ELEV (202)

TRANSITION ALTITUDE 2500 MSL



REMARKS:
During approach on PAR
GP all lights in the VASIS
will show red lights.
NDB AST is offset 1°
from OFU 039°

CEILING AND VISIBILITY MINIMA			OCL-CIRCLING		TIME TO THR 04 FROM AST IN MIN AND SEC-DISTANCE 8.07 NM							
TAKE OFF	DAY	NIGHT	OCL 2 NM	OCL 3 NM	90 KT	100 KT	110 KT	120 KT	130 KT	140 KT	150 KT	160 KT
LANDING			562(557)	700(695)	5:23	4:51	4:24	4:02	3:44	3:28	3:14	3:02



ELEV AND ALT IN FT MSL 200
HGT IN FT ABOVE AD ELEV (173)

FACILITIES AVAILABLE

Customs Immigration Passenger accommodations
AIS MET Hangarage Maintenance

LIGHTING

VASIS:	Normal GP 3.25°	RWY 04
	Normal GP 2.5°	RWY 32
Approach lights:	LIL (white)	RWY 14
	LIL, LIH (white)	RWY 04, 22
Wingbars:	LIL (red)	RWY 14
	LIL, LIH (white and red)	RWY 04, 22
Threshold lights:	LIL, LIH (green)	RWY 04, 14, 22, 32
Runway edge lights:	LIL, LIH white x)	RWY 04, 14, 22, 32
	x) last part LIH orange	
Runway end lights:	LIL, LIH (red)	RWY 04, 14, 22
Taxiway lights:	(blue)	
Obstruction lights:	(red)	
REMARK:	VASIS and LIH can be dimmed 100-0%	

BEARINGS OF RUNWAYS

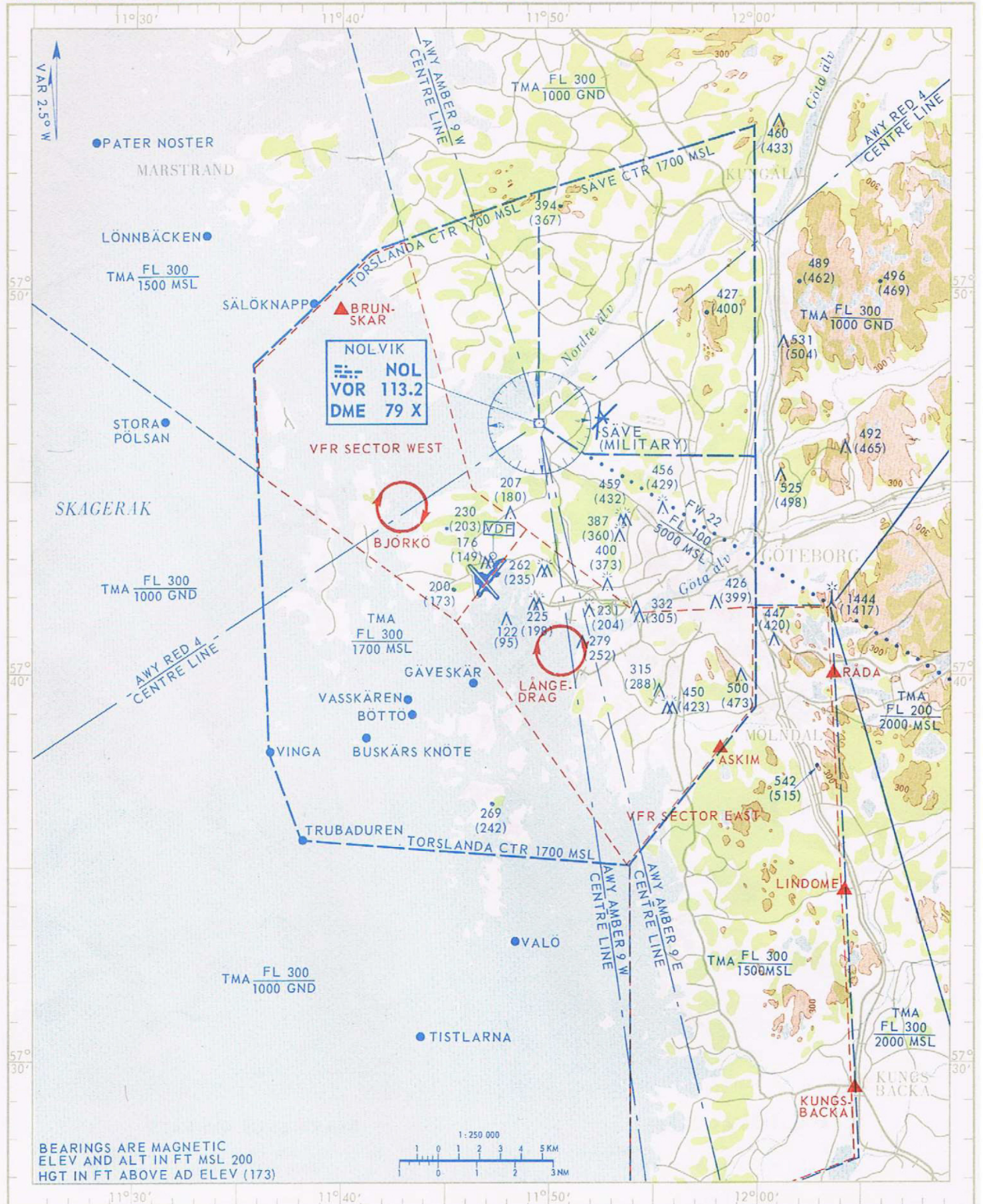
04/22 = 036°/216° GEO; 039°/219° MAG
14/32 = 138°/318° GEO; 141°/321° MAG

SURFACE AND STRENGTH

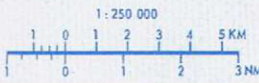
RWY 04/22:	Asphalt	20 000 KG SIWL
RWY 14/32:	Asphalt	20 000 KG SIWL
TWY:s	Asphalt	20 000 KG SIWL
Aprons:	Asphalt and concrete	20 000 KG SIWL

REMARKS

Turf landing areas are closed to all traffic except by special permission from TWR.
Thresholds RWY 04, 14, 22 permanently displaced.
Available landing distance: RWY 04 1713 M
RWY 14 1730 M
RWY 22 1719 M



BEARINGS ARE MAGNETIC
ELEV AND ALT IN FT MSL 200
HGT IN FT ABOVE AD ELEV (173)



**LEGEND
TECKENFÖRKLARING**



Holding
Väntläge

Normal entry and exit points for VFR traffic see AIP, RAC 3-1-3, para 3.2.1



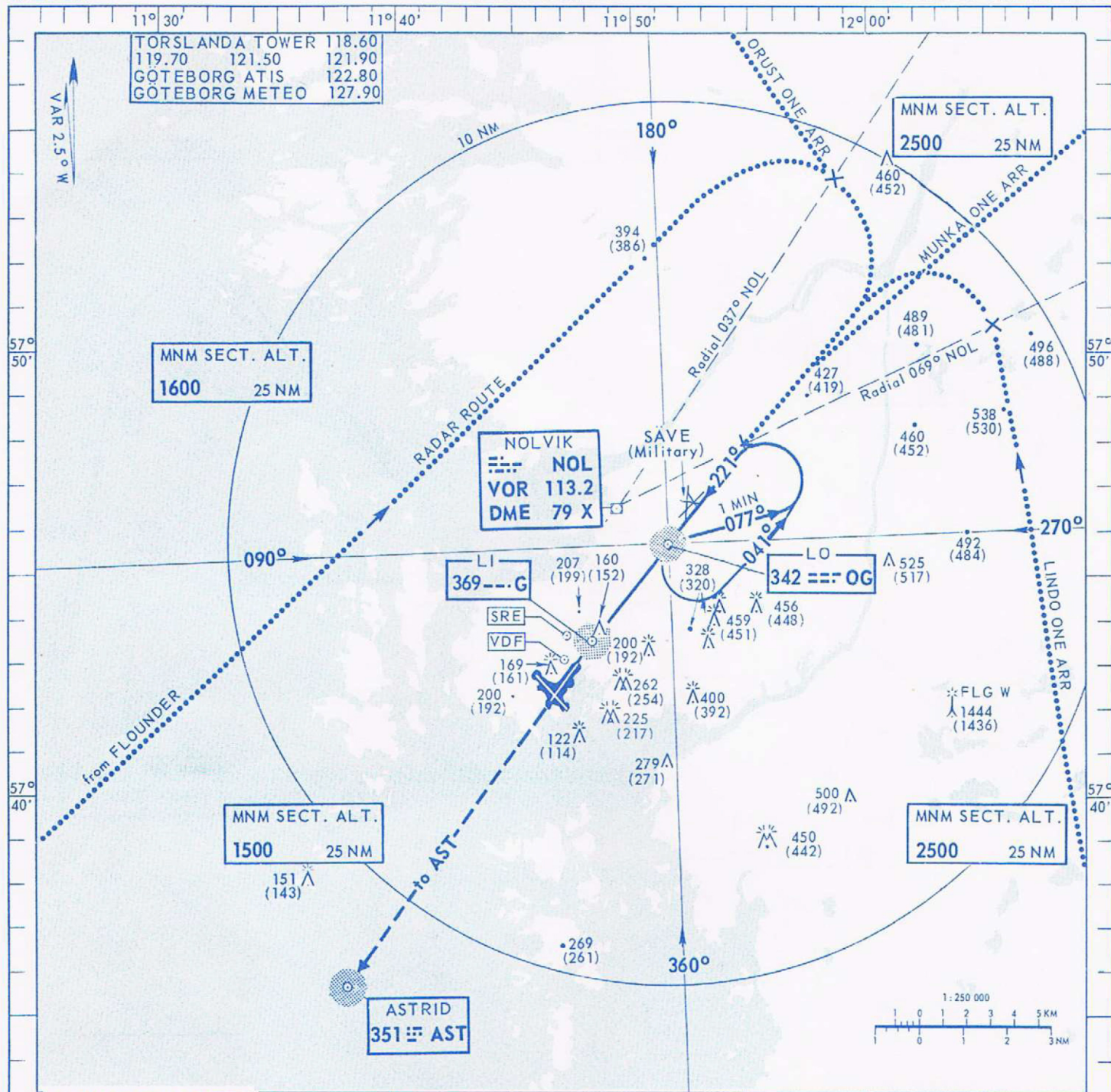
Ordinarie in- och utpasseringspunkter för VFR trafik se AIP, RAC 3-1-3, mom. 3.2.1

**TRANSITION ALTITUDE
2500 MSL**

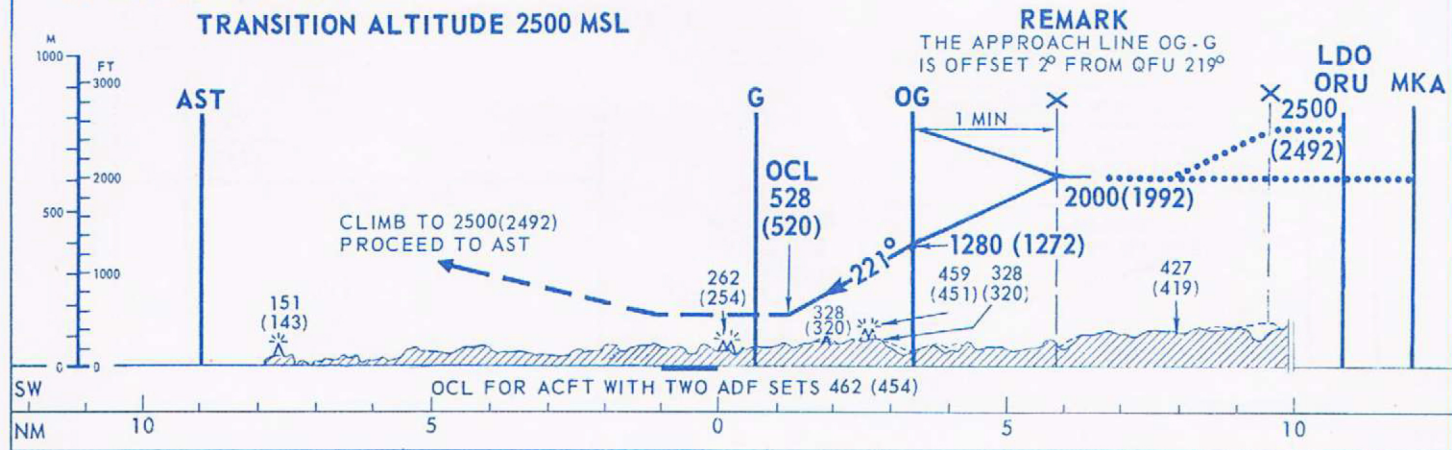
QFE-DATA

THR RWY 04: 5 FT
THR RWY 14: 18 FT
THR RWY 22: 8 FT
THR RWY 32: 7 FT

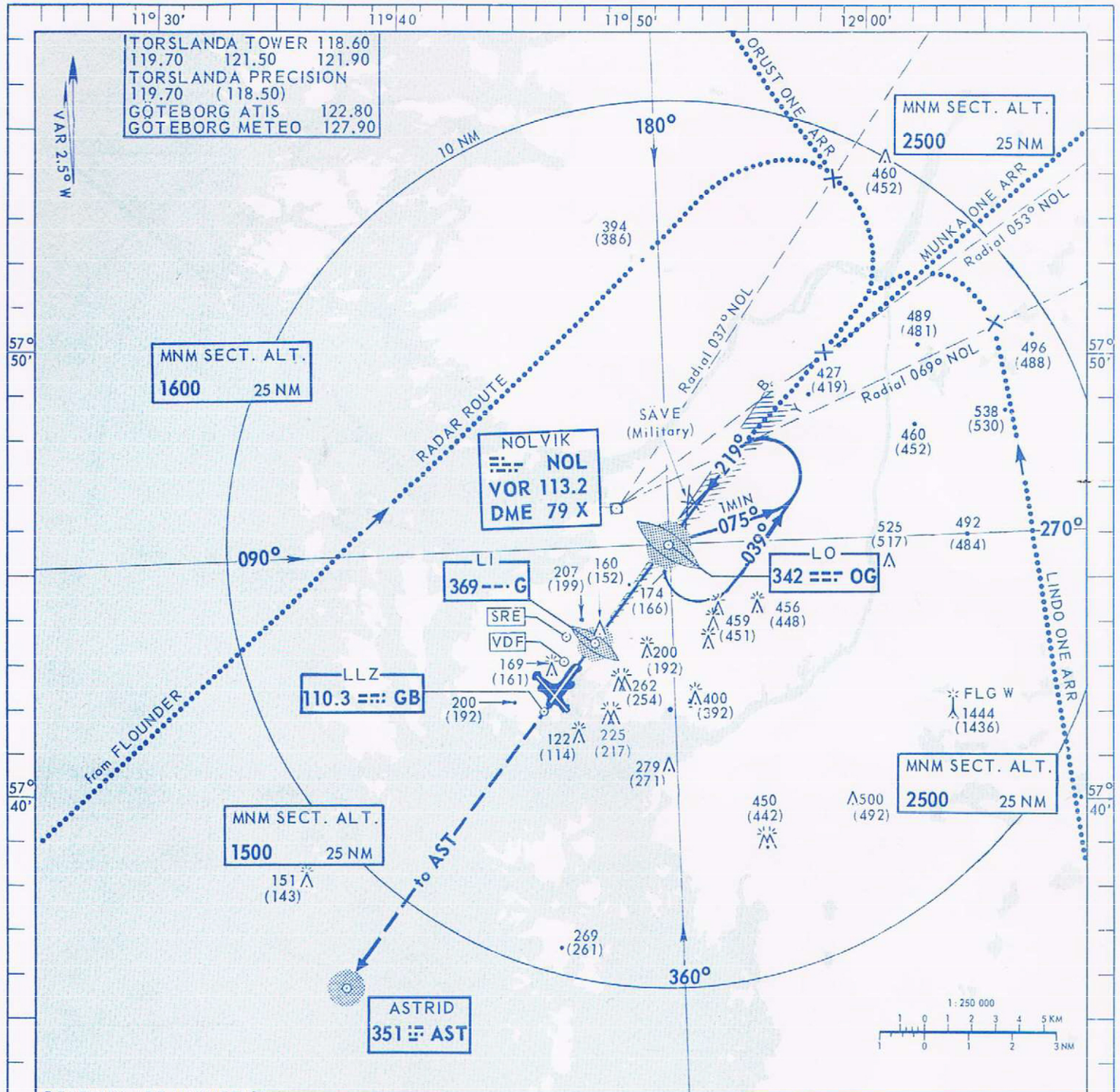
TORSLANDA TWR/VDF
118.60 119.70 121.50
TORSLANDA TWR GROUND
121.90
GÖTEBORG CONTROL 124.40
GÖTEBORG ATIS 122.80
GÖTEBORG METEO 127.90



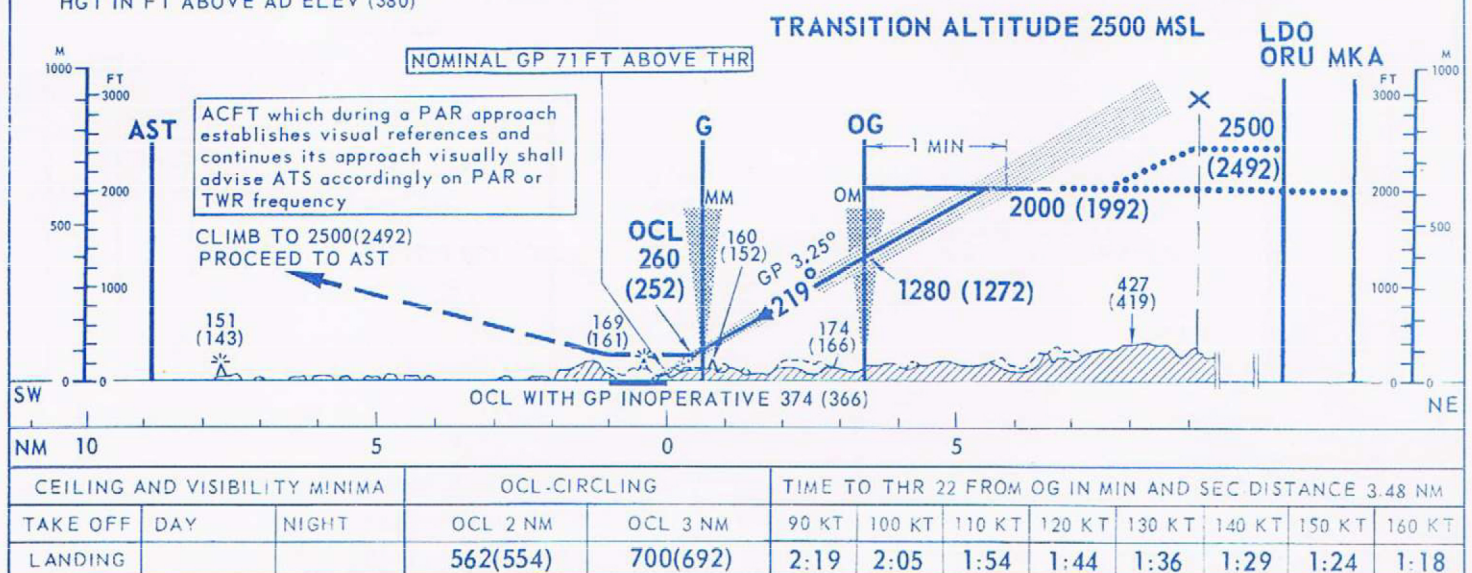
BEARINGS ARE MAGNETIC
ELEV AND ALT IN FT MSL
HGT IN FT ABOVE AD ELEV (380)

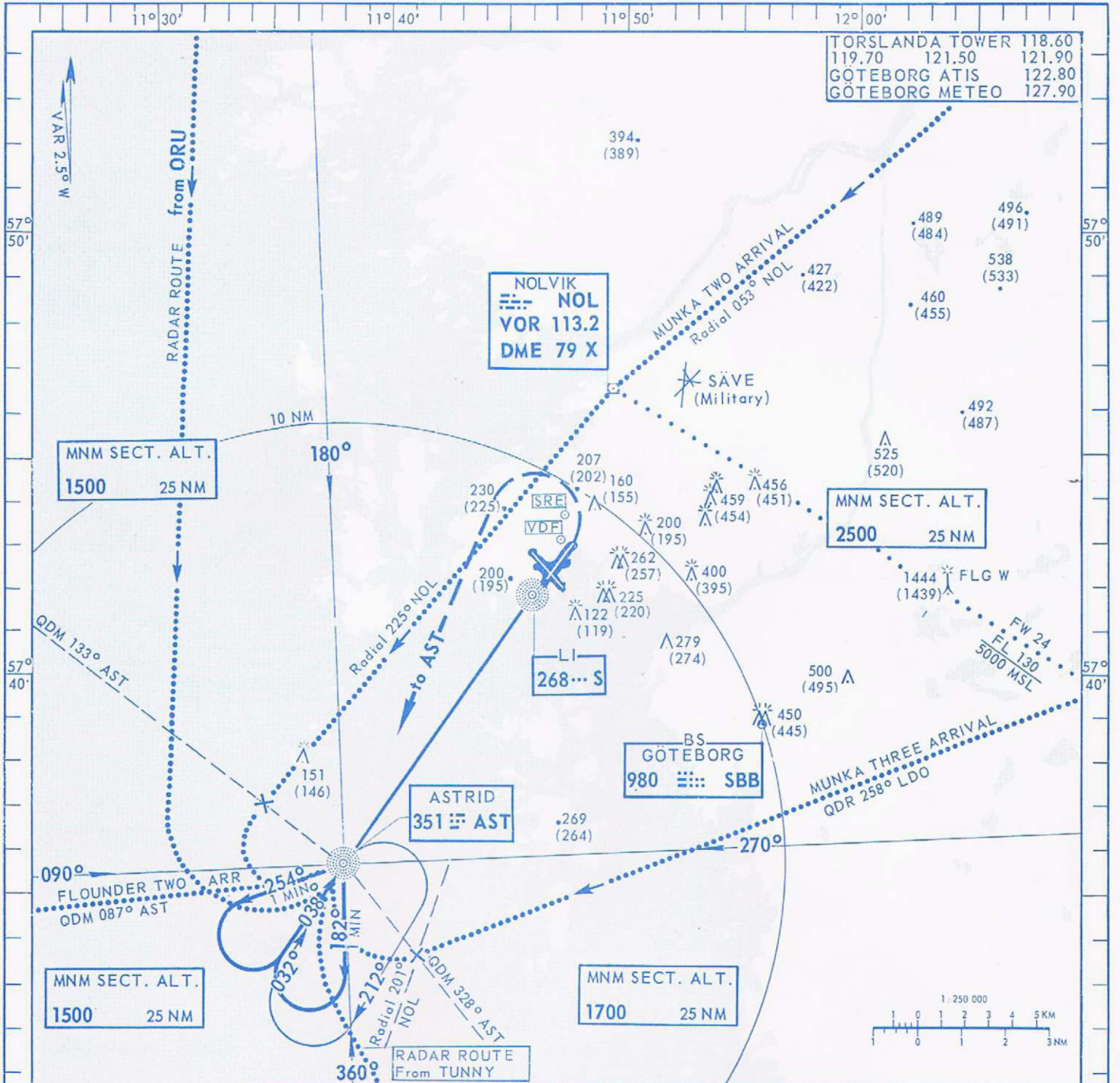


CEILING AND VISIBILITY MINIMA			OCL-CIRCLING		TIME TO THR 22 FROM OG IN MIN AND SEC-DISTANCE 3.48 NM							
TAKE OFF	DAY	NIGHT	OCL 2 NM	OCL 3 NM	90 KT	100 KT	110 KT	120 KT	130 KT	140 KT	150 KT	160 KT
LANDING			562(554)	700(692)	2:19	2:05	1:54	1:44	1:36	1:29	1:24	1:18



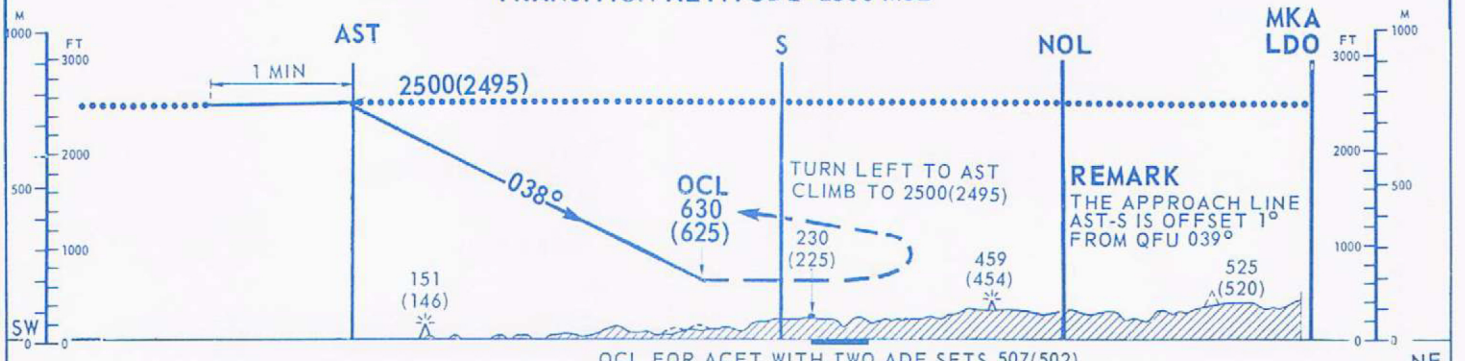
BEARINGS ARE MAGNETIC
ELEV AND ALT IN FT MSL 388
HGT IN FT ABOVE AD ELEV (380)



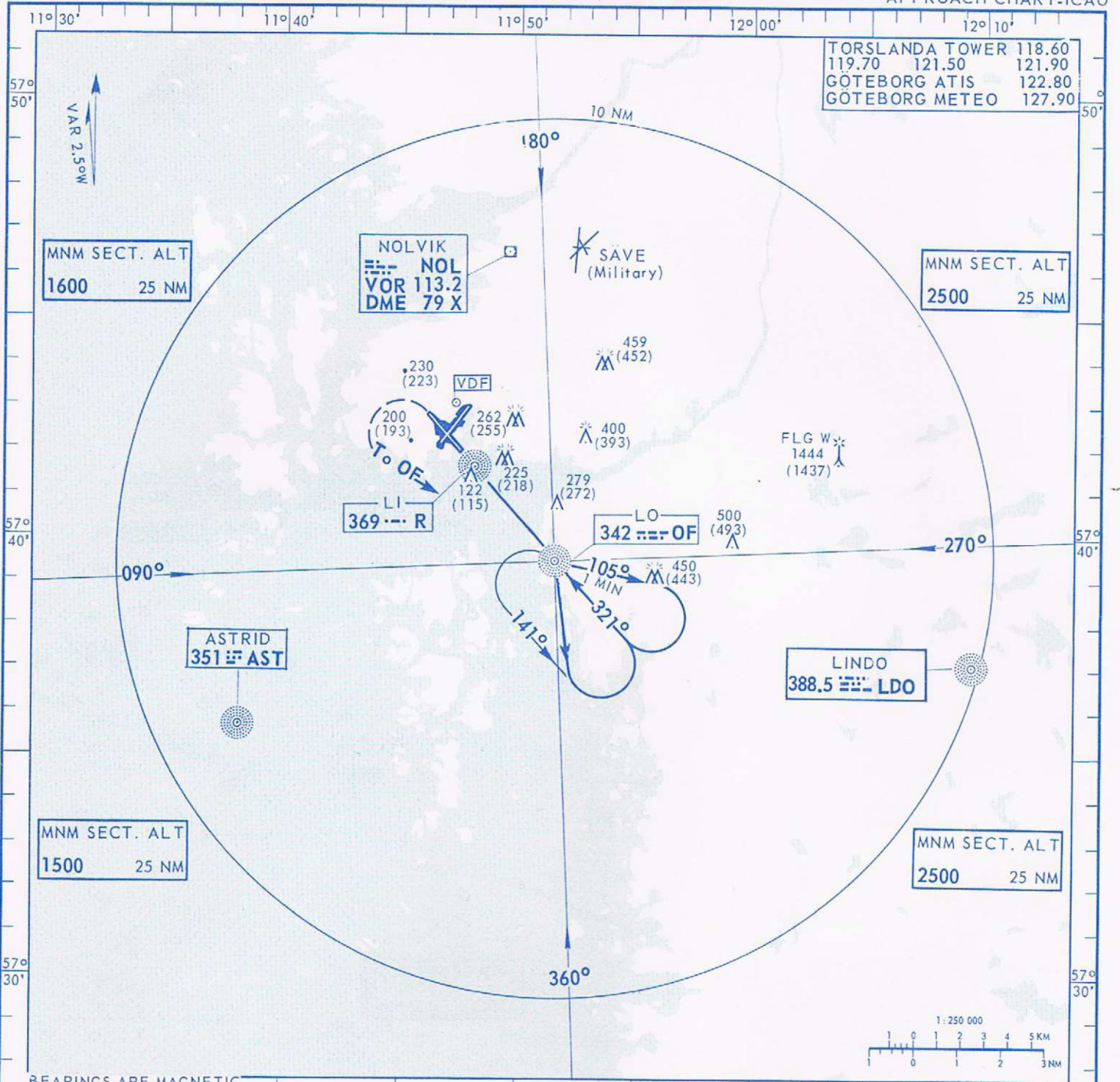


BEARINGS ARE MAGNETIC
ELEV AND ALT IN FT MSL 207 |
HGT IN FT ABOVE AD ELEV (202)

TRANSITION ALTITUDE 2500 MSL

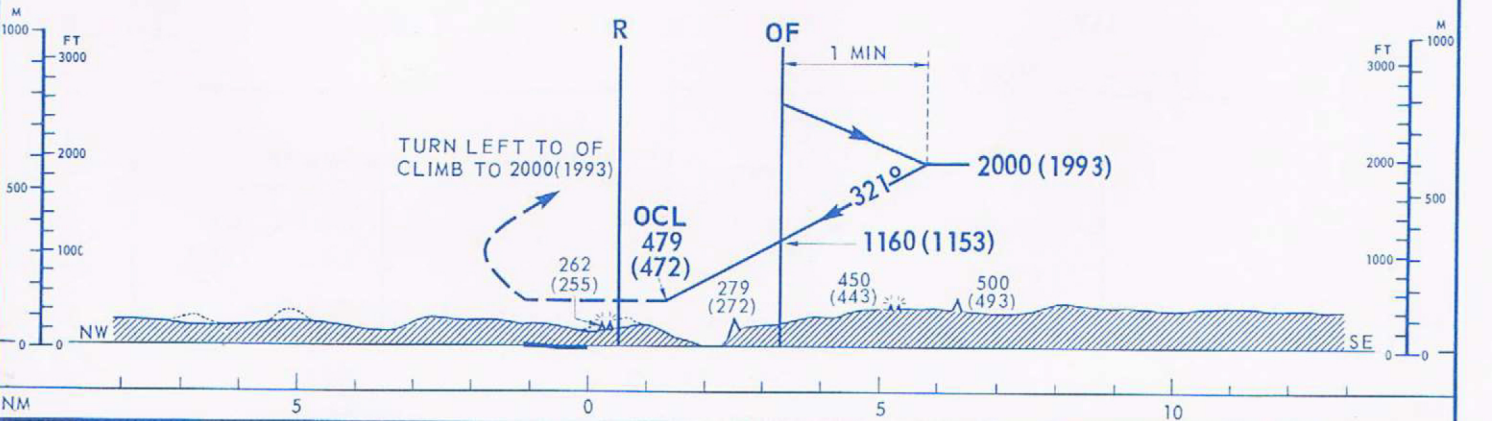


CEILING AND VISIBILITY MINIMA			OCL-CIRCLING		TIME TO THR 04 FROM AST IN MIN AND SEC-DISTANCE 8.07 NM							
TAKE OFF	DAY	NIGHT	OCL 2 NM	OCL 3 NM	90 KT	100 KT	110 KT	120 KT	130 KT	140 KT	150 KT	160 KT
LANDING			562(557)	700(695)	5:23	4:51	4:24	4:02	3:44	3:28	3:14	3:02



BEARINGS ARE MAGNETIC
ELEV AND ALT IN FT MSL 200
HGT IN FT ABOVE AD ELEV (193)

TRANSITION ALTITUDE 2500 MSL



CEILING AND VISIBILITY MINIMA			OCL-CIRCLING		TIME TO THR 32 FROM OF IN MIN AND SEC-DISTANCE 3.28 NM							
TAKE OFF	DAY	NIGHT	2 NM	3 NM	90 KT	100 KT	110 KT	120 KT	130 KT	140 KT	150 KT	160 KT
LANDING			562(555)	700(693)	2:11	1:58	1:47	1:38	1:31	1:24	1:19	1:14